

Welcome



Bel-Air Heights HOA Meeting

Tuesday, July 27, 2017



JOHNSON COUNTY LEADERSHIP

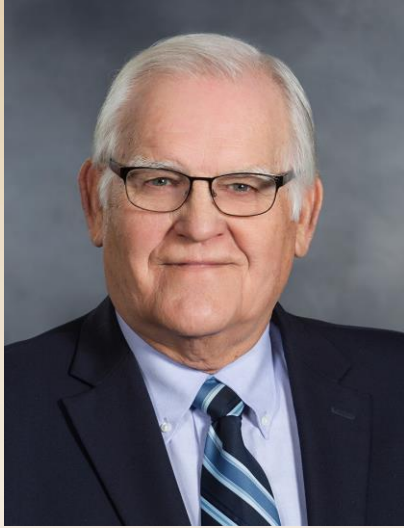


Commissioner
Jason Osterhaus

4th District



JOHNSON COUNTY LEADERSHIP



Chairman Ed Eilert



County Manager
Hannes Zacharias



JOHNSON COUNTY LEADERSHIP



Sheriff
Calvin
"Cal" H.
Hayden



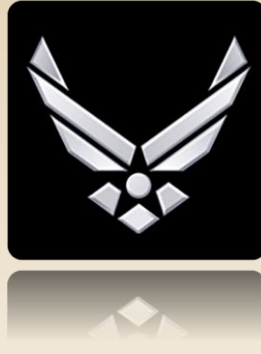
District
Attorney
Steve
Howe

THE JOHNSON COUNTY COMMUNITY



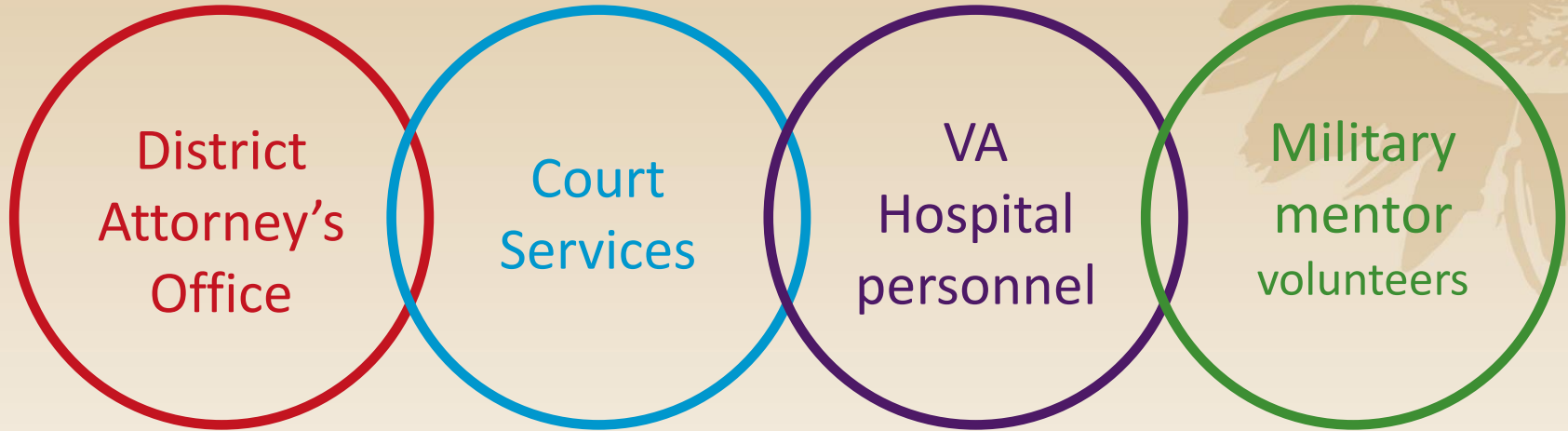
A large and
diverse
community!







COMMUNITY FOR VETERANS



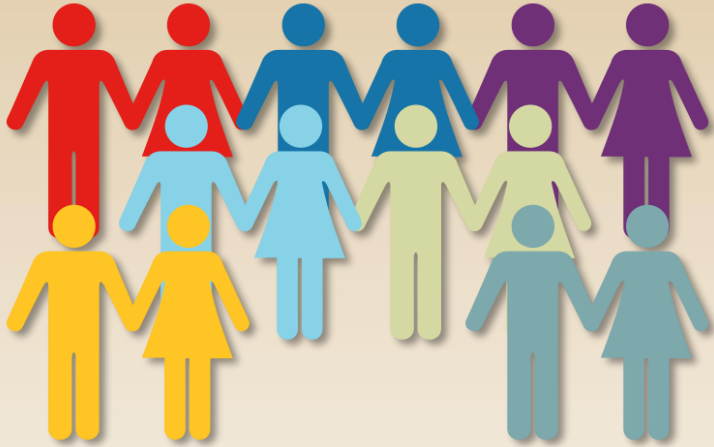
Johnson County VETERANS TREATMENT COURT



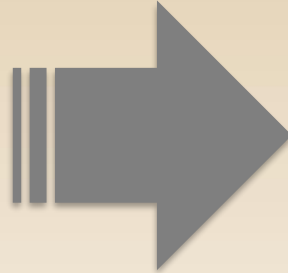
COMMUNITY OF VOLUNTEERS



COMMUNITY OF VOLUNTEERS



14,200 volunteers



370,000 hours

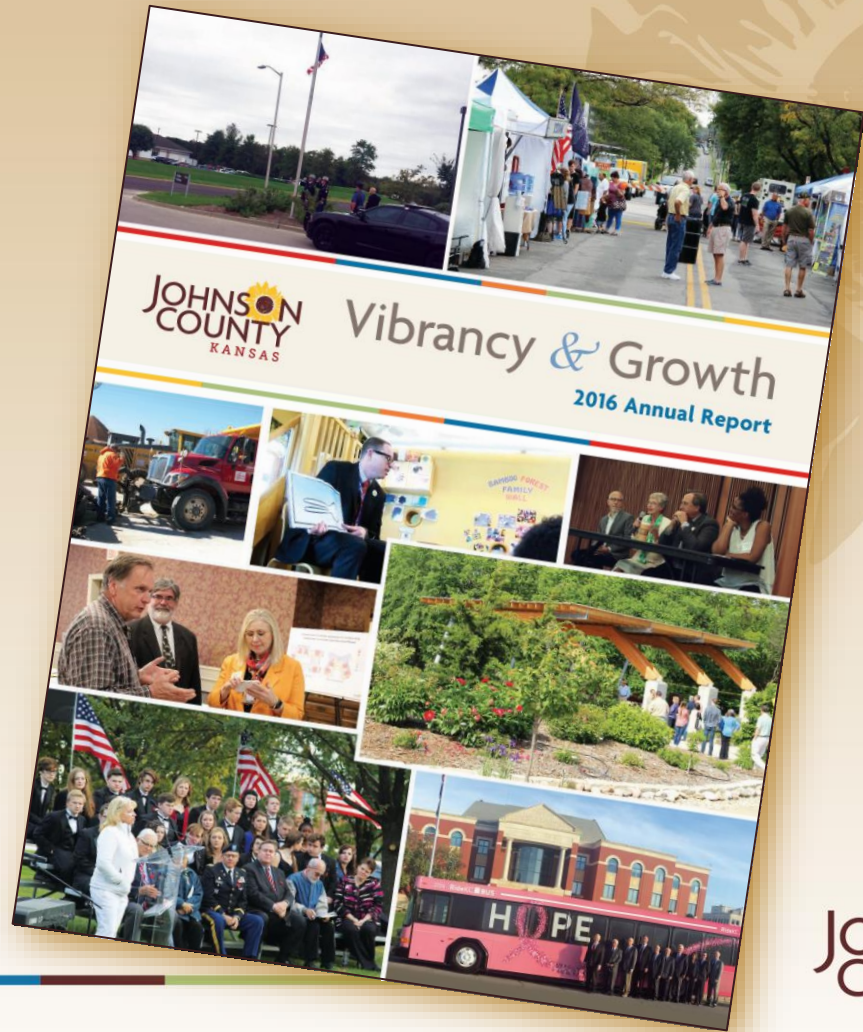
COMMUNITY OF VOLUNTEERS

In 2016, volunteers gave time
valued at

\$8.5 million

COMMUNITY OF CHOICE

Johnson County's YEAR IN REVIEW



FINANCIAL STEWARDSHIP

**LOWEST COUNTY
MILL LEVY** of the 105
Kansas counties

FINANCIAL STEWARDSHIP



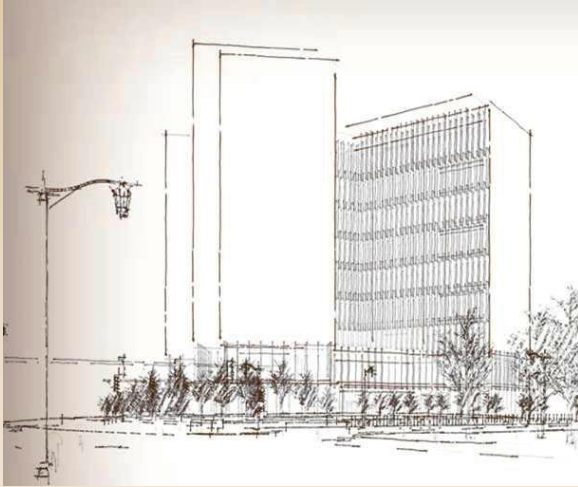
FitchRatings

**STANDARD
& POOR'S**

Our
**TRIPLE AAA
BOND RATINGS**



FINANCIAL STEWARDSHIP



+\$200 million



COMMUNITY FEEDBACK



County government
works hard to
**DELIVER IMPORTANT
SERVICES**

COMMUNITY FEEDBACK



Residents felt
**SAFE IN THEIR
NEIGHBORHOODS**

COMMUNITY FEEDBACK

96%



JOHNSON
COUNTY
KANSAS

83%



U.S.



Residents satisfied
**WITH JOHNSON COUNTY
AS A PLACE TO LIVE**

JOHNSON
COUNTY
KANSAS

COMMUNITY FEEDBACK

95%



JOHNSON
COUNTY
KANSAS

79%



U.S.



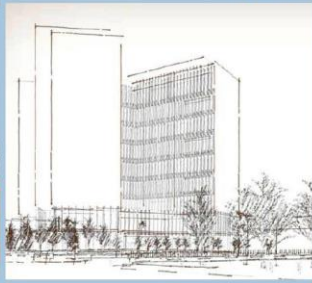
Satisfied with
**JOHNSON COUNTY AS A
PLACE TO RAISE CHILDREN**

JOHNSON
COUNTY
KANSAS

“Even if you are on the right track,
you’ll get run over if you just sit there.”

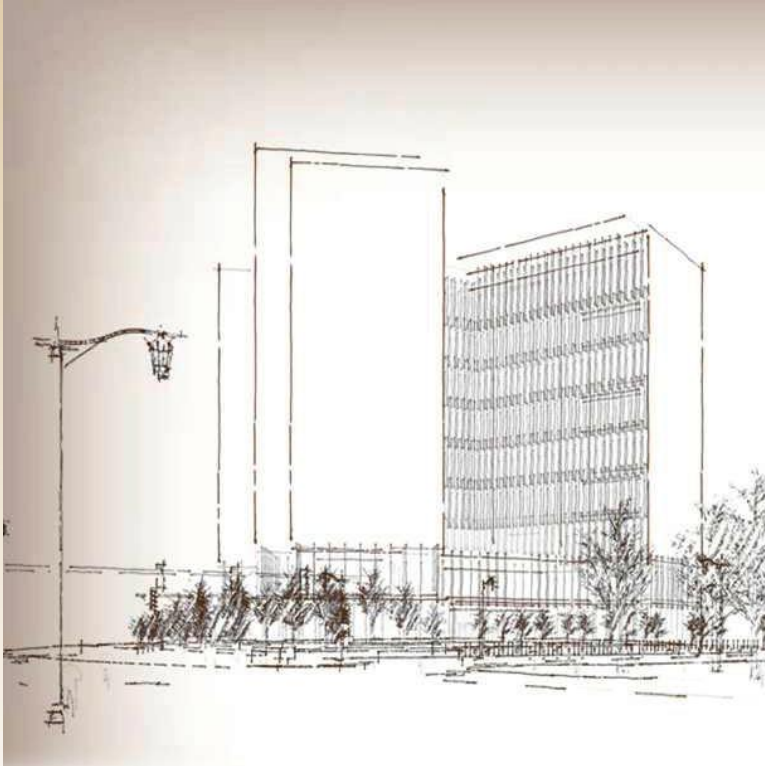
— Will Rogers

2017
Major
projects



Many exciting
activities
IN 2017!

2017 PROJECTS



Our new county courthouse will
**SERVE OUR
JUDICIAL NEEDS
FOR 75+ YEARS**

2017 PROJECTS



JCW proceeding with
the...

**TOMAHAWK CREEK
WASTEWATER TREATMENT
FACILITY IMPROVEMENTS**

2017 PROJECTS



- Construction contract mid-2018
- Completion by end of 2021

2017 PROJECTS



Johnson County Stormwater Management Program **STRATEGIC BUSINESS PLAN**

2017 PROJECTS



The plan adopts a
**WATERSHED-BASED
APPROACH**

MOST IMPORTANT SERVICES



2017 PROJECTS



Johnson County
Library: **NEW**
FACILITIES AND
IMPROVEMENTS



Johnson County
continues to
**DEVELOP AND
RENOVATE PARKS**

2017 PROJECTS



Johnson County
Arts & Heritage Center

THE GRAND OPENING
WAS ON JUNE 10

2017 PROJECTS



Johnson County
Museum
50th ANNIVERSARY



COMMUNITY OF ECONOMIC STRENGTH



Our county continues
to be **THE BREAD AND
BUTTER ECONOMY OF
THE STATE**

COMMUNITY OF ECONOMIC STRENGTH

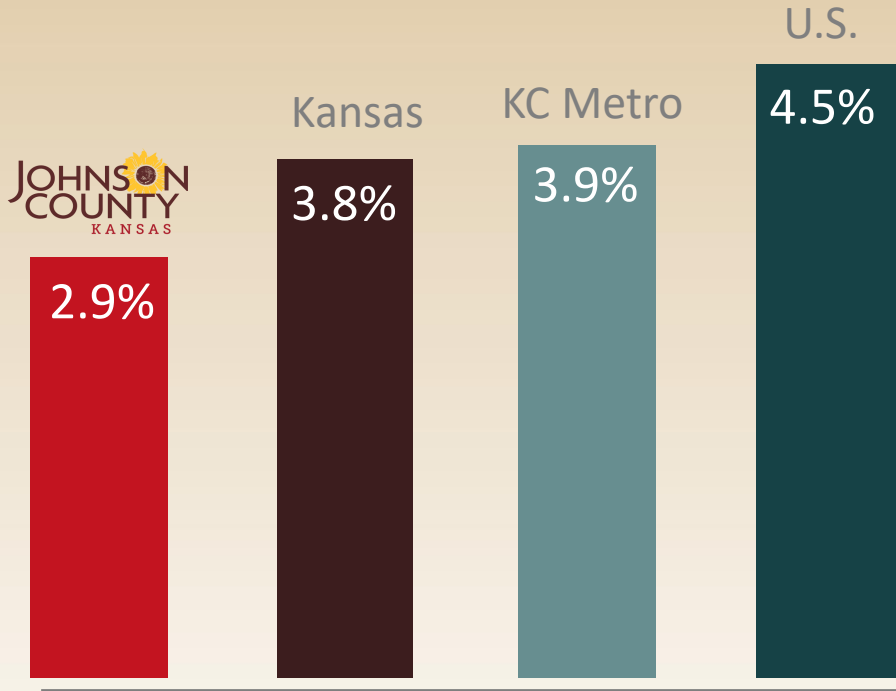
7th

STRAIGHT
YEAR

of UNEMPLOYMENT
DECLINE



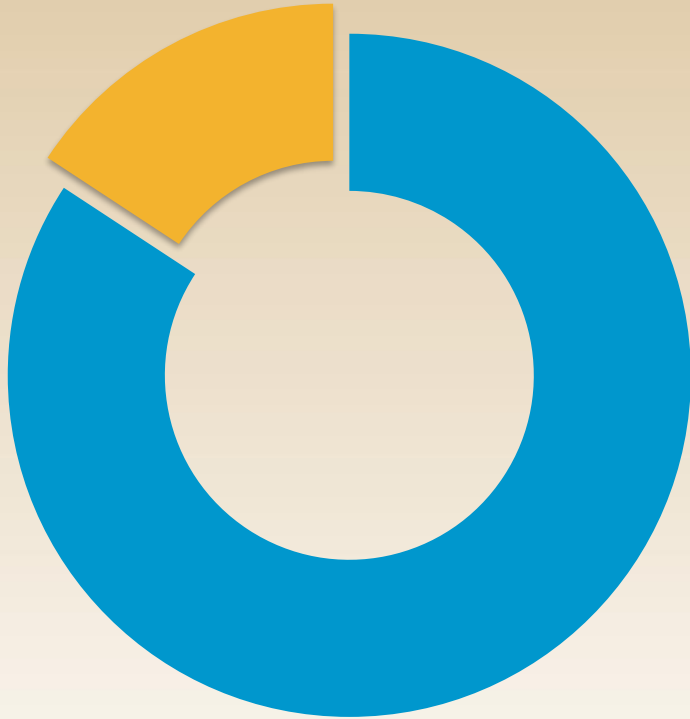
COMMUNITY OF ECONOMIC STRENGTH



Our county has
**A LOW
UNEMPLOYMENT
RATE**

As of Dec. 2016

COMMUNITY OF ECONOMY STRENGTH



Of the 3,181 Kansas jobs created Jan. to Sept. 2016,
**2,680 WERE IN
JOHNSON COUNTY**

COMMUNITY OF ECONOMIC STRENGTH



11,300

single-family
homes sold

COMMUNITY OF ECONOMIC STRENGTH



1,700

SINGLE-FAMILY
PERMITS



1,800

MULTI-FAMILY
PERMITS

COMMUNITY OF ECONOMIC STRENGTH

9.9 million
sq. feet

\$730 million

Value of space
permitted for
**NEW OFFICE,
RETAIL AND
INDUSTRIAL
BUILDINGS**

COMMUNITY OF ECONOMIC STRENGTH



Logistics Park IN EDGERTON



BUILDING BLOCKS



EXCELLENT
K-12
EDUCATION



BUILDING BLOCKS



Johnson County Education
Research Triangle — JCERT:
KU EDWARDS CAMPUS,
K-STATE OLATHE,
AND KU CLINICAL
RESEARCH TRIALS

BUILDING BLOCKS



\$100,000 available to residents for KU Edwards and K-State Olathe JCERT programs



JOHNSON COUNTY
COMMUNITY COLLEGE



In 2016, issued more than
2,000 CERTIFICATES



JOHNSON
COUNTY
KANSAS



JOHNSON COUNTY
COMMUNITY COLLEGE



The Automation
Engineering Program
**PROVIDES TECHNICAL
AND MANAGEMENT
LEVEL STAFFING**



JOHNSON COUNTY
COMMUNITY COLLEGE



Reinvigorating its
**CAREER and
TECHNICAL
EDUCATION
PROGRAM**

BUILDING BLOCKS



JOHNSON COUNTY™
COMMUNITY COLLEGE
FOUNDATION

\$1 million+
IN SCHOLARSHIPS
ANNUALLY





Johnson County
Government's 160th
ANNIVERSARY



Johnson County
Government established
on **SEPT. 7, 1857**

- 4,000 residents
- 3 county commissioners



Olathe, Shawnee,
De Soto, Gardner
and Spring Hill
CELEBRATING
160 YEARS





JOHNSON
COUNTY
KANSAS

Questions?